



MMS 3000

## BOECO MAGNETIC STIRRER MMS 3000

Motor drive magnetic stirrer, with stainless steel plate and speed regulation up to 3000 rpm. An optional to be ordered detachable support rod allows to fix different sensors (temperature, pH etc.) inside the Liquid.

### Specification:

Speed range:	0 - 3000 1/min
Max. stirring volume:	up to 20,0 l
Platform size:	160 mm diam.
Platform material:	stainless steel
Support rod height:	320 mm
Overall size:	185 x 230 x 75 mm
Weight:	1,5 kg
Power:	12 V. DC 2,0A (External power adapter)

### Code

BOE 8056500

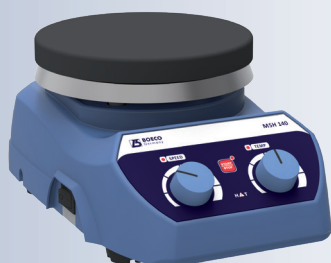
BOE 8056501

### Description

Magnetic stirrer MMS-3000, AC Adapter  
100-240V with Multi plug (EU, US, UK, AU)

Detachable support rod

Available Q3/2018 !



MSH 140



MSH 140 DIGITAL

## BOECO MAGNETIC STIRRER WITH HOTPLATE MSH 140, MSH 140 DIGITAL

Motor drive Magnetic stirrer with ceramic coated stainless steel hot plate for simultaneously stirring and heating of chemical reagents. „Hot-Surface“ alert indicator light when the plate temperature exceeds 50°C

### Specification:

	MSH140 digital	MSH140
Over all dimensions(LxBxH) (mm)	156x248x104	156x248x104
Set-up plate dimensions (mm)	140	140
Stirring quantity in Ltr (max)	10	10
Number of stirrer positions	1	1
Setup plate feature (Coating)	ceramic coated stainless steel plate	
IP Rating	IP 21	IP 21
Product weight (kg)	2,2	2,2
Safety temp circuit	Yes	no
Safe temp. (°C)	345	no
Power supply	110/240VAC	110/240VAC
Maximum bar size (mm)	25 - 60	25 -60
Speed range (rpm)	200 - 2200	200 - 2200
Heating temp. range (°C)	320	320
Hot surface alert (°C)	50	50

### Control

Time range	1 to 999 minutes & continuous	no
Motor type	DC	DC
Motor rating input & Output (W)	5-7	5-7
Accuracy in RPM (+/- RPM)	+/-80	-
speed step	10	-
Heat Output (W)	600	600
Power output (W)	610	610
Temp Accuracy [+/-K]	1	-
Temp increment	1	-
Temp indication	yes	no
Permissible ambient temp (°C)	5-40	5-40
Error code Display	yes	no
Housing Material	ABS	ABS
Display	Yes	no

### Code

BOE 8014000

BOE 8014001

BOE 8014110

BOE 8014111

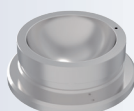
### Description

Magnetic stirrer with hotplate MSH 140, 240V

Magnetic stirrer with hotplate MSH 140, 110V

Magnetic stirrer with hotplate MSH 140 digital, 240V

Magnetic stirrer with hotplate MSH 140 digital, 110V

500 ML REACTION  
BLOCK

### Accessories for MSH 140 digital

#### Code

BOE 8014120

BOE 8014121

BOE 8014122

#### Description

Support stand with boss head clamp for PT 1000  
sensor probe

PT 1000 sensor

Reaction block, 500 ml