

BOECO COMBI-SPIN, FVL-2400N PLUS

this combination of a centrifuge and a vortex mixer for Micro test tubes is specially designed for the genetic engineering researches (especially for PCR-diagnostics experiments). It can be used also in biochemical clinical laboratories as well as microbiological and industrial biotechnology laboratories. Combi-Spin ensures the possibility for the simultaneous mixing and separation of the samples, using centrifuge and mixing modules

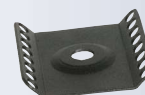
Specification:

Rotation speed (constant):	2800 rpm (50 Hz), 3500 rpm (60 Hz)
Max RCF:	500 x g (50 Hz), 700 x g (60 Hz)
Continuous operation time:	< 60 min
Accessories included:	1 rotor for 12 x 1,5 ml 1 rotor for 12 x 0,5 and 0,2 ml
Overall size:	190 x 235 x 125 mm
Weight:	1,7 kg

Code	Description
BOE 8071000	Combi-Spin, FVL-2400N plus, 220 V, 50/60 Hz
BOE 8071100	Combi-Spin, FVL-2400N plus, 110 V, 60 Hz
BOE 8071001	SR-16, rotor for 2 x 8-well 0,2 ml microtest strips
BOE 8071002	SR-32, rotor for 4 x 8-well 0,2 ml microtest strips



COMBISPIN
FVL-2400N PLUS



SR-16

BOECO ROTATOR BIO RS-24

Mini-rotator with vertical rotation of the platform for soft mixing of test tubes, microtubes and vacutainers.

Incl. Standard platform PRS-22 for 22 tubes up to 15 mm diam.

Specification:

Speed range:	5 - 30 1/min
Digital Timer:	from 1 min to 23 h 59 min / non-stop
Overall size:	325 x 180 x 155 mm
Weight:	1,4 kg
Power:	12 V. DC 2,0A (External power adapter)

Code	Description
BOE 8024000	Rotator Bio RS-24, with platform PRS-22, AC Adapter 100-240 V with Multi plug (EU, US, UK, AU)
BOE 8073001	Platform PRS-4/12 (4x30 mm diam. and 12x15 mm)



RS-24

BOECO BLOOD TUBE ROTATOR BTR 16

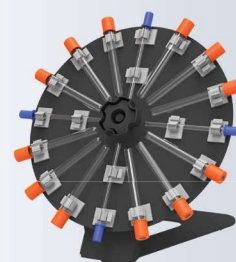
our compact designed BTR 16 with its circular rotating action gives gentle but effective mixing. It can accomodate up to 16 tubes (4 ESR tubes & 12 blood collection tubes) The tubes are easy to fix and remove.

The BTR 16 has a robust construction with a strong metal frame design

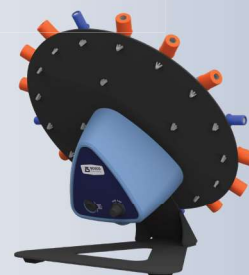
Specification:

Capacity:	16 Tubes (12 Blood collection Tubes + 4 ESR Tubes)
Motor:	AC Synchronous motor for noiseless operation
Speed:	Fixed Speed of 30 rpm with an accuracy of ± 2
Run Time:	Continuous / Infinite
Angle of Disc Plate:	Fixed angle of 38°
Maximum operational weight capacity:	1,5 kg
Protection class:	IP 21
Dimension (W x D x H):	278 x 252 x 183 mm
Weight:	1,4 kg

Code	Description
BOE 8026000	Blood Tube Rotator BTR 16, 220 V, 50/60 Hz
BOE 8026100	Blood Tube Rotator BTR 16, 110 V, 60 Hz



BTR-16



BOECO SUNFLOWER MINI-SHAKER 3D

Mini-Shaker 3D with adjustable speed and constant angle of mixing. Very small and ideal for private diagnostics. Incl. black non-slip silicone mat.

Specification:

Kind of motion:	three-dimensional orbital movement
Angle:	7°
Speed range:	50 - 60 rpm
Speed display:	scale (min/max)
Platform size:	215 x 215 mm
Overall size:	235 x 235 x 140 mm
Max Loading:	1 kg
Weight:	1,3 kg
Power:	12 V. DC 2,0A (External power adapter)

Code

BOE 8058000

Description

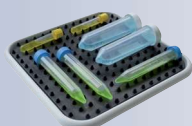
Sunflower Mini Shaker 3D, AC Adapter
100-240 V with Multi plug (EU, US, UK, AU)

BOE 8050200

Dimpled mat



3D



DIMPLED MAT

BOECO TUBE ROLLER TR-6

the microprocessor controlled BOECO TR-6 provides gentle rocking and rolling motion. The user can define programs (speed & time) and its Pulse mode provides a momentary pause for through mixing (Pulse can be set for a range of 30 sec. to 90 sec. time) The rollers are fully autoclavable and easy to remove which could allow to use bigger tubes.

Specification:

Housing:	Plastic (ABS)
Motion:	Rolling & Rocking
Tilt angle	± 3°
Motor:	Brushless DC motor
Speed range:	10 - 80 rpm / 1 rpm
Speed display:	LED
Timer:	1 minute to 99 min. / non-stop
Roller:	6 Rolls / 5 positions (Nylon - autoclavable)
Roller Length:	327 mm
Max Loading capacity	2 kg
Protection class	IP 21
Permissible ambient temp.	4°C to 50°C
Permissible rel. humidity	<80°C
Input voltage	100-240 VAC, 50/60 Hz
Output voltage	24VDC
Overall size:	505x293x90 (WxDxH)
Weight:	approx. 4,2 kg

Code

BOE 8025010

Description

Tube roller TR-6, AC adapter 100-240 V, 50/60Hz



TR-6



MR-1

BOECO MINI-ROCKER SHAKER MR-1

provides gentle rocking motion. It is perfect for soft mixing of biological components. Incl. black non-slip silicone mat

Specification:

Kind of motion:	rocking with fixed 7° angle
Speed range:	5 - 30 rpm
Speed display:	scale (min/max)
Timer:	digital, 1 min - 23h 59min / non-stop
Platform size:	215 x 215 mm
Overall size:	220 x 205 x 120 mm
Max Loading:	1 kg
Weight:	2,1 kg
Power:	12 V. DC 2,0A (External power adapter)

Code

BOE 8058500

Description

MR-1, Mini-rocker Shaker, AC Adapter 100-240 V with Multi plug (EU, US, UK, AU)

BOECO ROTATOR MULTI BIO RS-24

is an intelligent rotator for soft mixing microtubes and vacutainers. The BioRotator RS-Multi provides 3 types of motion, which can be used separately (except for vortex mode, which works in conjunction with reciprocal motion mode) and consecutively in a cycle:

1. Orbital motion



simple even circular motion - common type of motion used in Rotators. Adjustable speed from 1 to 100 rpm.

2. Reciprocal motion



vertical rotation with changing direction of rotation. Adjustable turning angle (from 1° to 90°, increment 1°) sets the limits for this type of motion. The speed is the same as set for rotational motion (from 1 to 100 rpm). In this type of motion there is a pause function (from 0 to 5 sec., increment 1 sec.) settable in the Vortex/pause mode.

3. Vortex motion



intensive mixing of samples at high speed with small amplitude - Vortex motion. The vortex mode is necessary for intensive mixing in and it is provided to decrease adhesion of solutions with tube surface, which is especially important for conducting microquantity research when the sample weight may be equal to the adhesion force. The vortex, mode has an adjustable turning angle of 0° to 5° (increment 1°) and the timer has a pause function from 0 to 5 sec., increment 1 sec.)

Specification:

Standard platform capacity:	PRS-26 for 26 (Microtubes and vacutainers)
Power:	12 V. DC 2,0A (External power adapter)
Size:	365 mm x 195 mm x 155 mm
Weight:	1,8 kg

Code

BOE 8073000

Description

Rotator Multi Bio RS-24, with platform PRS-26
AC Adapter 100-240 V with Multi plug
(EU, US, UK, AU)

BOE 8073002

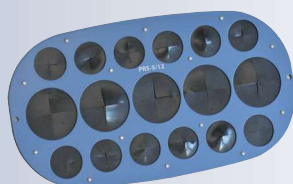
Platform PRS-5/12 for tubes (5 x 30 mm diam.
and 12 x 15 mm diam.)

BOE 8073003

Platform PRSC-10 for tubes 10 x 50 ml
(Tube Diam 20-30 mm)

BOE 8073004

Platform PRSC-22 for tubes 22 x 15 ml
(Tube Diam 10-16 mm)

ROTATOR
MULTI BIO RS-24

PRS-5/12



PRSC-10



PRSC-22

BOECO MICROPLATE SHAKER PSU-2T

Specially designed for medical diagnostic. Orbital shaking platform IPP-2 with a holding mechanism for 2 standard microtiter plates.

The use of direct drive and brushless motor allows continuous mixing up to 7 days and ensures reliable, trouble-free operation.

The variable speed control provides an optimally adapted speed range from 150 to 1200 rpm with an orbit of 2 mm.

Specification:

Orbit size:	2 mm
Speed range:	150 - 1200 1/min
Speed display:	scale (min/max)
Timer:	digital, 1 min - 23h 59min / non-stop
Overall size:	220 x 205 x 90 mm
Weight:	2 kg
Power:	12 V. DC 2,0A (External power adapter)

Code	Description
BOE 8052000	Microtiter Plate Shaker PSU-2T, incl. platform IPP-2 AC Adapter 100-240 V with Multi plug (EU, US, UK, AU)
BOE 8052002	Platform IPP-4 for 4 Microtiter Plates



PSU-2T



PLATFORM IPP-4

BOECO MICROPLATE INCUBATOR SHAKER PST-60 HL

The PST-60 HL shakers provide orbital shaking of the samples and have a heating platform for 2 x 96 or 4 x 96 wells microplates and an upper heating lid. The display indicates simultaneous set and actual time, temperature and shaking speed. The PST-60 HL are ideal for a variety of cytochemistry, immunochemistry, biochemistry and research applications.

Specification:	PST-60 HL	PST-60 HL 4
Temperature regulation range:	25°C 60°C	
Temperature setting resolution:	0,1°C	
Temp. Stability:	± 0,1 °C	
Temp. Uniformity over the platform:	± 0,25 °C	
Time of thermoblock heating from RT till 37°C:	12 min.	
Orbit :	2 mm	
Max. height of micotest plate:	18 mm	
Speed regulation:	250 –1200 rpm / increment 10 rpm	
Timer with sound signal:	1 min - 96 hrs, increment 1 min	
Power (external) :	DC 12 V. 5 A	
Platform dimensions:	250 x 150 mm	210 x 290 mm
Number of microplates:	2	4
Size :	270x260x125 mm	380x390x140 mm
Weight incl. power supply :	6,1 kg	9,1 kg

Code	Description
BOE 8072000	Microplate Incubator Shaker PST-60 HL, for 2 plates, AC 100-240 V, 50/60 Hz
BOE 8072040	Microplate Incubator Shaker PST-60 HL 4, for 4 plates, AC 100V-240 V, 50/60 Hz



PST-60 HL



PST-60 HL 4