

## BOECO COMBI-SPIN, FVL-2400N PLUS

this combination of a centrifuge and a vortex mixer for Micro test tubes is specially designed for the genetic engineering researches (especially for PCR-diagnostics experiments). It can be used also in biochemical clinical laboratories as well as microbiological and industrial biotechnology laboratories. Combi-Spin ensures the possibility for the simultaneous mixing and separation of the samples, using centrifuge and mixing modules

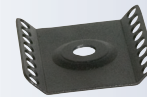
### Specification:

Rotation speed (constant): 2800 rpm (50 Hz), 3500 rpm (60 Hz)  
 Max RCF: 450 x g (50 Hz), 700 x g (60 Hz)  
 Continuous operation time: < 60 min  
 Accessories included: 1 rotor for 12 x 1,5 ml  
 1 rotor for 12 x 0,5 and 0,2 ml  
 Overall size: 190 x 235 x 125 mm  
 Weight: 1,7 kg



COMBISPIN  
FVL-2400N  
PLUS

Code	Description
BOE 8071000	Combi-Spin, FVL-2400N plus, 220V 50/60 Hz
BOE 8071100	Combi-Spin, FVL-2400N plus, 110V 60 Hz
BOE 8071001	SR-16, rotor for 2 x 8-well 0,2 ml microtest strips
BOE 8071002	SR-32, rotor for 4 x 8-well 0,2 ml microtest strips



SR-16

## BOECO ROTATOR BIO RS-24

Mini-rotator with vertical rotation of the platform for soft mixing of test tubes, microtubes and vacutainers.

Incl. Standard platform PRS-22 for 22 tubes up to 15 mm diam.

### Specification:

Speed range: 5 - 30 1/min  
 Digital Timer: from 1 min to 23 h 59 min / non-stop  
 Overall size: 325 x 180 x 155 mm  
 Weight: 1,4 kg  
 Power: 12 V. DC 2,0A (External power adapter)



RS-24

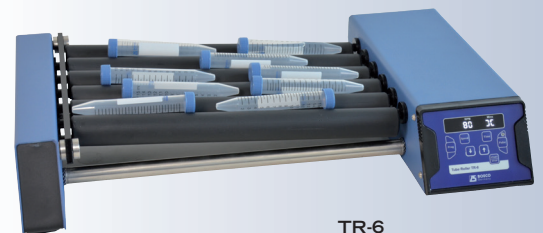
Code	Description
BOE 8024000	Rotator Bio RS-24, with platform PRS-22, AC Adapter 100-240V with Multi plug (EU, US, UK, AU)
BOE 8073001	Platform PRS-4/12 (4x30 mm diam. and 12x15 mm)

## BOECO TUBE ROLLER TR-6

the microprocessor controlled BOECO TR-6 provides gentle rocking and rolling motion. The user can define programs (speed & time) and its Pulse mode provides a momentary pause for through mixing (Pulse can be set for a range of 30 sec. to 90 sec. time) The rollers are fully autoclavable and easy to remove which could allow to use bigger tubes.

### Specification:

Housing: Powder coated sheet metal (from 2019 ABS)  
 (from approx. 2019 plastic)  
 Motion: Rolling & Rocking  
 Teilt angle: ± 3°  
 Motor: Brushless DC motor  
 Speed range: 10 - 80 rpm / 1 rpm  
 Speed display: LED  
 Timer: 1 minute to 99 min. / non-stop  
 Roller: 6 Rolls / 5 positions (Nylon - autoclavable)  
 Roller Length: 327 mm  
 Max Loading capacity: 2 kg  
 Protection class: IP 21  
 Permissible ambient temp. 4°C to 50°C  
 Permissible rel. humidity <80°C  
 Input voltage 100-240 VAC, 50/60 Hz  
 Output voltagw 24VDC  
 Overall size: 500x301x93 mm (from 2019: 505x323x90)  
 Weight: approx. 6 kg (from 2019: 4,2 kgs)



TR-6



TR-6 WITH PLASTIC BODY  
AVAILABLE IN APPROX 2019

Code	Description
BOE 8025000	Tube roller TR-6, AC adapter 100-240V, 50/60Hz